

CHAMBERLAIN®

MODELS MC100, MC100-P2, MC100C, AND MC100C-P2

UNIVERSAL GARAGE DOOR MINI REMOTE CONTROL



The Universal Garage Door Mini Remote Control can be programmed to activate up to two products, such as a garage door opener, MyQ® light controls, gate operator, or commercial door operator. Each button on the remote control works independently of the other and must be programmed separately. The images throughout this manual are for reference only and your product may look different.

The Universal Garage Door Mini Remote Control can be programmed to operate with different brands of garage door openers. It is compatible with most garage door opener systems manufactured by Chamberlain®, LiftMaster®, Sears Craftsman®, Garage Master®, Genie®, Linear®, Stanley®, Overhead Door®, Wayne Dalton®, Moore-O-Matic®, Do-It®, Master Mechanic®, Raynor®, and True Value®.



WARNING: This product can expose you to chemicals including lead, which are known to the State of California to cause cancer or birth defects or other reproductive harm. For more information go to www.P65Warnings.ca.gov



WARNING

To prevent possible **SERIOUS INJURY** or **DEATH** from a moving gate or door:

- **ALWAYS** keep remote controls out of reach of children. **NEVER** permit children to operate, or play with remote control transmitters.
- Activate gate or door **ONLY** when it can be seen clearly, is properly adjusted and there are no obstructions to door travel.
- **ALWAYS** keep gate or door in sight until completely closed. **NEVER** permit anyone to cross path of moving gate or door.



Read instructions thoroughly BEFORE beginning.

If using the Universal Garage Door Mini Remote Control with residential door openers, the remote control must be used only with door openers manufactured after 1993 that utilize photoelectric sensors. The photoelectric sensors are always located on or near the bottom of the door track.

The Universal Garage Door Mini Remote Control is compatible with the following brands, which use a program/learn button:

Garage Door Opener Brand	Type/Color of Program/Learn button	Year
Linear [®]	Mega-Code	'97-Current
Chamberlain ^{®*}	Orange/Red	'97-'03
Chamberlain ^{®*}	Purple	'05-Current
Chamberlain ^{®*}	Green	'93-'96
Genie [®] Overhead Door [®]	Intellicode	'95-Current
Genie ^{®**} Overhead Door [®]	Intellicode	'93-Current
Stanley [®]	Secure Code	'98
Chamberlain ^{®*}	Yellow	'11-Current
Wayne Dalton [®]	Rolling Code	'99

**LiftMaster[®], Do-It[®], Master Mechanic[®], Raynor[®], True Value[®] and Sears Craftsman[®] are compatible with Chamberlain technology.*

***Visit www.chamberlain.com/MC100 for Genie[®] Intellicode II instructions.*

PROGRAMMING

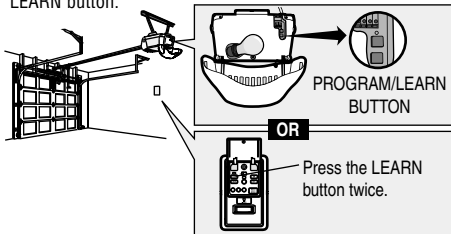
IMPORTANT: The remote will activate your door or gate during programming. Ensure door is clear of ALL obstructions.

1 Start with your garage door or gate closed.

2 Press and hold the bottom button on the remote control until the blue LED stays solid (approximately 10 seconds) then release the button.



3 Press and release the Program/LEARN button on your product. A ladder may be necessary to reach the Program/LEARN button.



4 On the remote control, press and release the button **twice** that you would like to program. The blue LED will blink for up to 60 seconds and the remote control will begin sending the preprogrammed codes to the garage door opener. Transmission can take up to 60 seconds.

5 When the garage door or gate begins to open, immediately press and release either button on the remote control to confirm the code and exit programming.

TEST

Test the remote control by pressing the button you programmed in step 4. If the garage door opener does not activate, repeat the programming steps or visit www.chamberlain.com/MC100 for additional instructions.

BATTERY

WARNING

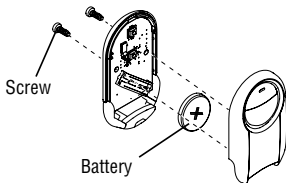
To prevent possible **SERIOUS INJURY** or **DEATH**:

- NEVER allow small children near batteries.
- If battery is swallowed, immediately notify doctor.

To reduce risk of fire, explosion or chemical burn:

- Replace **ONLY** with 3V CR2032 coin batteries.
- **DO NOT** recharge, disassemble, heat above 212°F (100°C) or incinerate.

Dispose of batteries properly. Replace **ONLY** with 3V CR2032 coin batteries.



NOTICE: To comply with FCC and or Industry Canada (IC) rules, adjustment or modifications of this receiver and/or transmitter are prohibited, except for changing the code setting or replacing the battery. **THERE ARE NO OTHER USER SERVICEABLE PARTS.**

Tested to comply with FCC Standards **FOR HOME OR OFFICE USE.**

Operation is subject to the following two conditions: (1) this device may not cause harmful interference, and (2) this device must accept any interference received, including interference that may cause undesired operation.



Need Help?

Go to www.chamberlain.com/MC100
or call 1-800-442-1255

All trade names used herein are trademarks of respective manufacturers listed.